



OASIS SANIC

under-sink reverse osmosis

TECHNICAL CATALOGUE

SIP A BETTER WATER



WITH BUILT-IN
ANTIMICROBIAL
PRODUCT PROTECTION

POWERED BY
MICROBAN 

Treated with the active substance silver phosphate glass
to prevent microbial growth on the product surface

CERTIFICATIONS:



Housings are tested and certified under the most stringent procedures worldwide, in compliance with DM 25 (Italy) and with the sanitary certification EAC/Ghostreghistrizia (Russia).

OASIS SANIC

OASIS SANIC is a range of under-sink reverse osmosis systems that are equipped with built-in silver-based antimicrobial protection, designed to provide complete water treatment directly from the home faucet. Proper use of the system can significantly reduce the levels of most water pollutants, such as pesticides, nitrates, fertilizers, heavy metals, and pathogenic microorganisms, while also enhancing the taste and flavour of the water. The use of OASIS SANIC systems also helps reduce the consumption of bottled water, thus contributing to a cleaner environment with less waste.



MAX WORKING PRESSURE
8 bar (116 psi)
MIN WORKING PRESSURE
STD/UV model 3 bar (45.5 psi)
PUMP/PUMP UV model 1 bar (14.5 psi)

MAX WORKING TEMPERATURE
45°C (113°F)
MIN WORKING TEMPERATURE
4°C (39,2°F)

BENEFIT

- Antimicrobial technology thanks to the antibacterial properties of silver.
- The taste of water, foods, and beverages will be enhanced.
- Less pollution and more savings due to the drastic reduction of bottled water.
- Small and compact, OASIS SANIC fits most under-sink spaces.

UNITS MAJOR FEATURES

- Shut-off valve
- High pressure pump (PUMP and PUMP-UV models)
- Pressure gauge (F models with frame)
- AC plug 2 pins C type - CEE 7/16 (Europlug)
- Max pressure switch
- AIC activated carbon post-filter
- AIM re-mineralizer post-filter
- Installation kit with dedicated tap

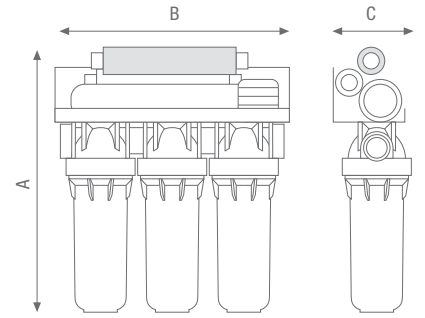
ACCESSORIES INCLUDED

- LUBRIKIT+ - single-dose lubricant for housing o-ring
- Filterfit - cartridge centering device
- Installation kit with dedicated tap
- Storage tank



-X- spanner

-RO VESSEL- spanner



FRAME MODELS



-F PUMP-



-F PUMP UV-

STANDARD MODELS



-STD-



-PUMP-



-UV-



-PUMP UV-



OASIS SANIC STD

RO UNIT WITH METAL WALL BRACKET

PART NUMBER	MODEL	RO MEMBRANE	DIMENSIONS mm		
			A	B	C
SA6075310	Oasis Trio 75 - STD SANIC	75 GPD - 1812	490	390	180



OASIS SANIC PUMP

RO UNIT WITH METAL WALL BRACKET

PART NUMBER	MODEL	RO MEMBRANE	DIMENSIONS mm		
			A	B	C
SA6075320	Oasis Trio 75 - PUMP SANIC	75 GPD - 1812	520	390	180

DIAPHRAGM BOOSTER PUMP

Supply power: 100-240 V - 50-60 Hz
 Voltage: 24 V
 Amperage: 0,9 A
 Power: 17 W
 Flow at 5,5 bar (80 psi): 0.63 l/min (0.17 GPM)
 Open flow: 1.34 l/min (0.35 GPM)
 Max output pressure: 8 bar (116 psi)



OASIS SANIC UV

RO UNIT WITH METAL WALL BRACKET

PART NUMBER	MODEL	RO MEMBRANE	DIMENSIONS mm		
			A	B	C
SA6075330	Oasis Trio 75 - UV SANIC	75 GPD - 1812	490	390	180

UV LAMP

UV-C dose: 300 J/m²
 Supply power: 220/240 V - 50-60 Hz
 Voltage: 24 V
 Amperage: 0.03 A
 Power: 6 W
 Lamp service life: 8000 hours



OASIS SANIC PUMP-UV

RO UNIT WITH METAL WALL BRACKET

PART NUMBER	MODEL	RO MEMBRANE	DIMENSIONS mm		
			A	B	C
SA6075340	Oasis Trio 75 - PUMP UV SANIC	75 GPD - 1812	550	390	180

DIAPHRAGM BOOSTER PUMP

Supply power: 100-240 V - 50-60 Hz
 Voltage: 24 V
 Amperage: 0,9 A
 Power: 17 W
 Flow at 5,5 bar (80 psi): 0.63 l/min (0.17 GPM)
 Open flow: 1.34 l/min (0.35 GPM)
 Max output pressure: 8 bar (116 psi)

UV LAMP

UV-C dose: 300 J/m²
 Supply power: 220/240 V - 50-60 Hz
 Voltage: 24 V
 Amperage: 0.03 A
 Power: 6 W
 Lamp service life: 8000 hours



OASIS-F SANIC PUMP

RO UNIT WITH METAL FRAME

PART NUMBER	MODEL	RO MEMBRANE	DIMENSIONS mm		
			A	B	C
SA6075350	Oasis-F Trio 75 - PUMP SANIC	75 GPD - 1812	520	390	225

DIAPHRAGM BOOSTER PUMP

Supply power: 100-240 V - 50-60 Hz
 Voltage: 24 V
 Amperage: 0,9 A
 Power: 17 W
 Flow at 5,5 bar (80 psi): 0.63 l/min (0.17 GPM)
 Open flow: 1.34 l/min (0.35 GPM)
 Max output pressure: 8 bar (116 psi)



OASIS-F SANIC PUMP-UV

RO UNIT WITH METAL FRAME

PART NUMBER	MODEL	RO MEMBRANE	DIMENSIONS mm		
			A	B	C
SA6075360	Oasis-F Trio 75 - PUMP UV SANIC	75 GPD - 1812	520	390	225

DIAPHRAGM BOOSTER PUMP

Supply power: 100-240 V - 50-60 Hz
 Voltage: 24 V
 Amperage: 0,9 A
 Power: 17 W
 Flow at 5,5 bar (80 psi): 0.63 l/min (0.17 GPM)
 Open flow: 1.34 l/min (0.35 GPM)
 Max output pressure: 8 bar (116 psi)

UV LAMP

UV-C dose: 300 J/m²
 Supply power: 220/240 V - 50-60 Hz
 Voltage: 24 V
 Amperage: 0.03 A
 Power: 6 W
 Lamp service life: 8000 hours



High efficiency pre-filter cartridges with Antimicrobial Product Protection

Ask for original replacement filter cartridges and grant your OASIS RO unit the best performances.

CARTRIDGES KIT

PART NUMBER	MODEL

1 | FA SANIC - SEDIMENT antimicrobial technology

PP STRING-WOUND FILTER 25 micron with Antimicrobial Product Protection Technology: filtration of sand, scales, lime, rust, particles. Life-span: 6 months / Max temperature: 45°C (113°F).

2 | CPP SANIC - SEDIMENT antimicrobial technology

PP MELT-BLOWN 5 micron with Antimicrobial Product Protection Technology: filtration of sand, scales, lime, rust, fine particles. Life-span: 6 months. / Max temperature: 45°C (113°F).

2 | CB EC VOC - volatile organic compound

ACTIVATED CARBON BLOCK 5 micron: filtration of fine particles, rust, lime, sand, scales; reduction of chlorine (bad tastes, odors) and VOC (Volatile Organic Compound). Life-span: 3-6 months. / Max temperature: 45°C (113°F).

SPARE PARTS



-SANIC TS- transparent DP bowl with o-ring
CODE LS7120840



-SANIC BG- opaque DP bowl with o-ring
CODE LS7120841



Cartridges kit for OASIS SANIC
CODE SE6075200



KIT DP/HYDRA/HYDRA RAINMASTER
CODE RE9020676



-FILTERFIT- cartridge centering device
CODE LA7406012



DP TRIO SANIC 1/4" head
CODE LS7100101



-X- spanner for DP TRIO SANIC
CODE RB7403017



Spanner for RO VESSEL SANIC
CODE RB7403014



-RO VESSEL SANIC-
CODE SB6300100



O-ring kit for RO VESSEL
CODE RE7513212



Entry water tap
CODE RE7402001



Max pressure switch
CODE RE7402009



Male elbow junction 1/8 thread x 1/4 hose
CODE RE7402066



Drain clamp
CODE RE7402059



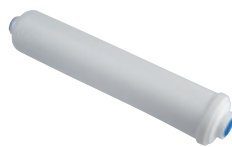
Pressure gauge (frame models)
CODE RE7402014



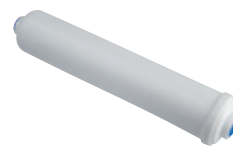
Dedicated tap
CODE RE7402000



Plastic tank 12 liter
CODE RE7402058



AIC activated carbon post-filter
CODE RE7402004



AIM re-mineralizer post-filter
CODE RE7402005



RO membrane 75 GPD - 1812
CODE RE7402075



Booster pump kit bracket models
CODE RE7402061



stainless steel uv with electric ballast
CODE RE7402021



UV lamp
CODE RE7402022



Tank valve junction 1/4" hose
CODE RE7402003



Shut-off valve
CODE RE7402006



In-line flow regulator
CODE RE7402060



Single clip 2,5"
CODE RE7402016



Double clip 2,5" x 2"
CODE RE7402017



Manual flush valve
CODE RE7402019



PE hose 1/4"
CODE RE7402023



**Straight junction
1/4" thread x 1/4" hose**
CODE RE7402024



**Male TE junction
1/4 pin x n°2 1/4 hose**
CODE RE7402067



Elbow junction 1/4" hose
CODE RE7402026



**Male elbow junction
1/8" thread x 1/4" hose**
CODE RE7402027



**Male elbow junction
1/4" thread x 1/4" hose**
CODE RE7402028



**Male TS junction 1/4"
pin x 1/4" hose**
CODE RE7402068



T junction 1/4" hose
CODE RE7402030



OASIS SANIC
under-sink reverse osmosis



www.atlasfiltri.com